



# Education & Outreach Moment

NSF PHASE I CENTER FOR ADAPTING FLAWS INTO FEATURES

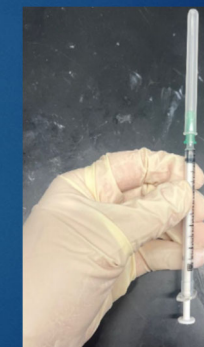
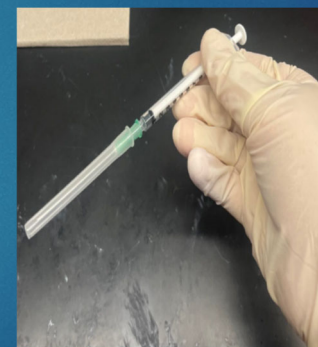
[NSFCAFF.ORG](http://NSFCAFF.ORG)



# Proper Sharps Protocol



- Sharps are the most common source of lab injuries
- Sharps are any device or object that can produce lacerations or punctures to the skin (e.g., razor blades, glass, needles/syringes, capillary tubes).
- Always place sharps in appropriate waste containers.
  - Dispose of the container when it is  $\frac{3}{4}$  full.
  - Glass waste should go in a plastic-lined cardboard container.
- Do NOT leave sharps unattended or left out.
- Keeps sharps pointed away from yourself.
- Get rid of cracked equipment.
- Do NOT recap needles, but if necessary, use the scoop method.



RICE

<https://safety.rice.edu/sharps>